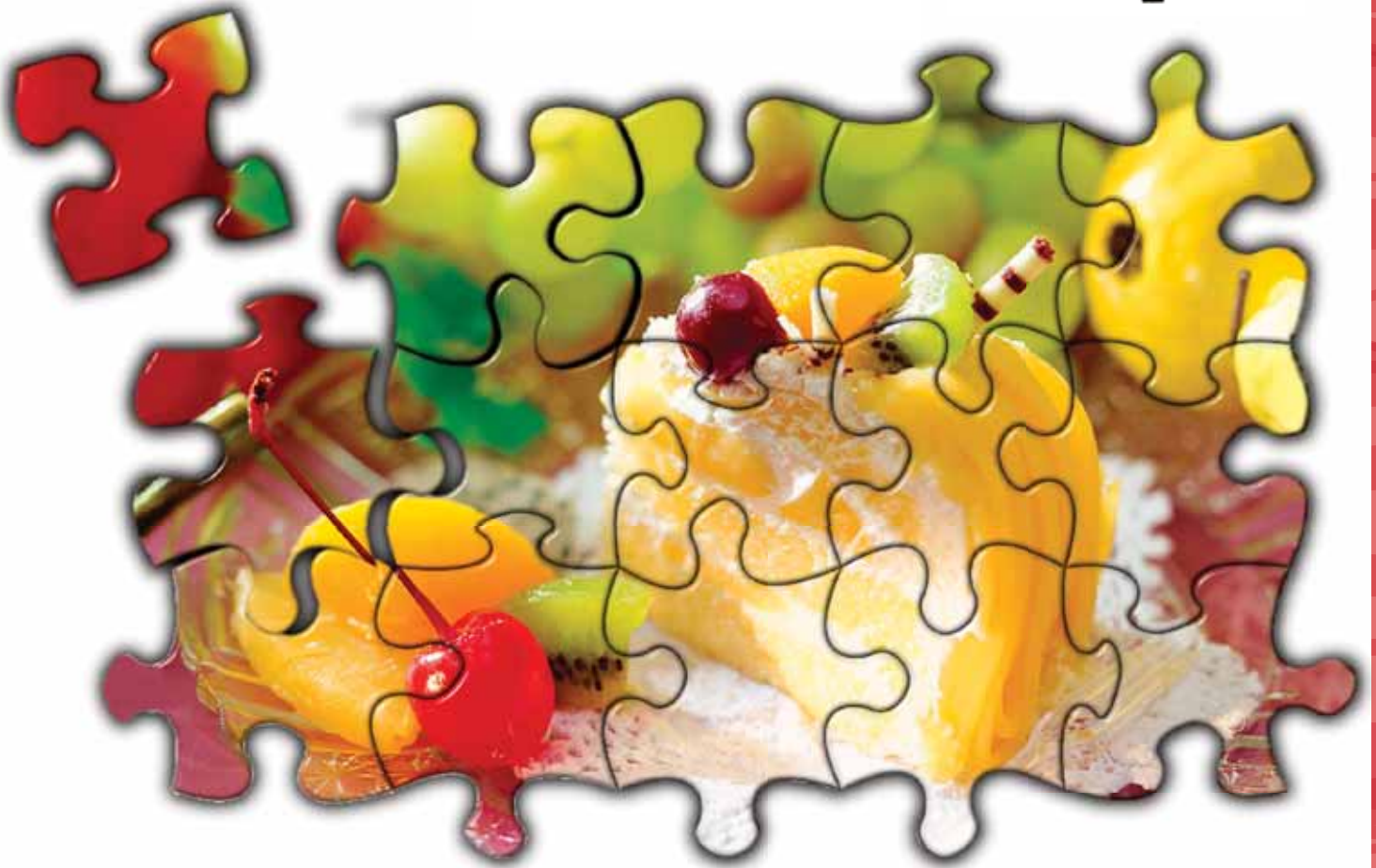




# RM-5800

POS Scale

Powerful partner in your retail business



*Searching for  
a New Balance*

## RM-5800 Series



## Basic Specifications

| Model                 | RM-5800B  | RM-5800B-Promo | RM-5800H                                | RM-5800H-Promo |
|-----------------------|---|----------------|---|----------------|
| Capacity              |   | 3/6kg          | 6/15kg                                  | 15/30kg        |
| Interval              |   | 1/2g           | 2/5g                                    | 5/10g          |
| CPU                   | 1.6GHz N2600  |                |   |                |
| Memory                | DDR3 2G   |                |   |                |
| HDD                   | 2.5" SATA HDD 320G, SSD 32G or SD card  |                |   |                |
| OP Display            | 12.1" TFT-LCD with Touch panel  |                |   |                |
| Cust Display          | LCD(202X32)   | Promo 9"TFT    | LCD(202X32)                             | Promo 9"TFT    |
| Printer               | Thermal printer, Paper Width: Max 60mm, Printing Speed: 80mm/sec                    |                |   |                |
| I/O                   | 1x LAN(from CV05)<br>2x USB(CV05-USB3/4)<br>1x RS232(CV05-COM5), 1x RJ9 Cash drawer |                |   |                |
| Power Source          | AC 88 ~ 132V, 50/60 Hz (Factory preset)   |                | AC 176 ~264V, 50/60 Hz (Factory preset) |                |
| Operating Temperature | -10 ~ +40   |                |   |                |
| Operating Humidity    | 15% ~ 85% RH  |                |   |                |

| Model        | RM-5800EVEL  | RM-5800EV   | RM-5800EV-PLUS |
|--------------|--|-------------|----------------|
| Capacity     | 3/6kg  | 6/15kg      | 15/30kg        |
| CPU          | N2600 1.6GHz   |             |                |
| Memory       | DDR3 2G Memory   |             |                |
| HDD          | 2.5" SATA HDD 320G, SSD 32G or SD Card                         |             |                |
| OP Display   | 12.1" TFT-LCD with Touch panel*                                |             |                |
| Cust Display | 10" full transparent display with pixel 256 x 120              | LCD(202X32) | 12.1 TFT       |
| Printer (1)  | Thermal printer<br>Paper width: Max60mm<br>Print speed: 80mm/s |             |                |
| (2)          | Thermal printer with Auto-cutter<br>Paper width: 80mm          |             |                |
| I/O          | 1 xETHT, 1 xRS232, 1 xRJ9 Cash drawer, 2 xUSB                  |             |                |
| Embedded OS  | Win7, Win XPE, WinCE, Linux                                    |             |                |

\*1024 x 768 or 800 x 600 Pixel screen are selectable.  
\*Specifications are subject to change without prior notice.

### TERAOKA SEIKO CO.,LTD.

13-12 Kugahara 5-Chome, Ohta-ku,  
Tokyo 146-8580, JAPAN  
TEL: +81-3-3752-2131  
FAX: +81-3-3752-2801  
URL: <http://www.digisystem.com>  
E-MAIL: [info@digi.jp](mailto:info@digi.jp)

### SHANGHAI TERAOKA ELECTRONIC CO., LTD.

Tinglin Industry Developmental Zone,  
Jinshan District, Shanghai 201505  
TEL: +86-21-57234888  
FAX: +86-21-47233049  
<http://www.digisystem.com>