

### Detailed Purchase Invoices by Supplier Reports.

Samstock 4.8  
has more  
features and  
functions than  
ever before.



A complete new database structure has been introduced using DBISAM a priority Delphi database management system. 'Database Transactional Management' has been implemented for improved integrity. The system has an in built record locking system in order to prevent data corruption. Databases of up to 4 gigabyte can be processed using the new structure.

Now with product, financial, hourly, staff sales collection and reporting. Complete Journal collection with user definable view and printing criteria. Program management of essential files, such as

questions, condiments, customer, accounts etc. In-built screen designer, for menu management from the back office PC.

Management of button, product, customer and account images with transmission from PC to terminal. A New Communications protocol using F(ile) T(ransfer) P(rotocol) for speedier communications across a network has been introduced for the Sentinel Terminal.

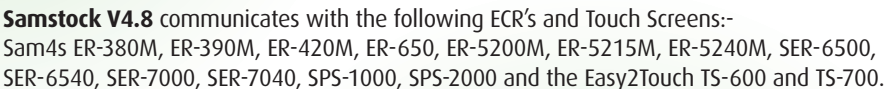
- NISA link for purchase orders by EDI & product update
- Integration to Sage Line 50
- Aceeca Hand Held Terminal for product creation, deliveries, stock taking etc.



**Minimum System Requirements**

- Windows XP Professional, Windows Vista Business or Windows 2000 Professional.
- 512MB of RAM.
- 1GB of available hard disk space.
- DVD or CD-ROM drive.

“Over 10,000 businesses benefit from using Samstock. The versatility and user friendliness of the software provides solutions for the single outlet, independent operator or large, multiple group. Samstock works equally well in both Retail and Hospitality environments providing the versatility to work with a range of POS hardware from low cost cash registers to sophisticated PC based solutions”.

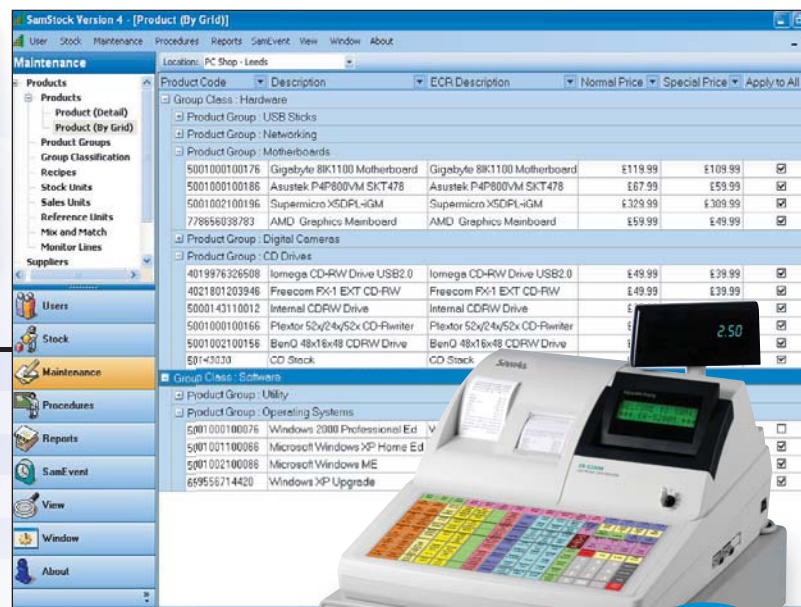






**Minimum System Requirements**

- Windows XP Professional, Windows Vista Business or Windows 2000 Professional.
- 512MB of RAM.
- 1GB of available hard disk space.
- DVD or CD-ROM drive.



## > Samstock - An Overview

Samstock is a Stock Control and Management Information System suitable for retail and hospitality businesses. Choose single store or multiple branch licenses providing comprehensive reporting for both one location or consolidated branches.

Samstock tracks sales quantities and values for each product sold providing detailed, comprehensive reports on sales and profit. Historical sales reports are available by date range and comparative periods.

Samstock provides stock control with recommended re-orders, delivery tracking and stock taking with variance reporting. Samstock can also control maintenance of product files including prices and promotions.

Samstock automatically collects detailed sales information from the Point of Sale either directly to your back office PC via Ethernet, PSTN or ADSL Broadband.

Samstock communicates with various cash registers (see below), Sentinel and I.C.R. touch Screen Software.

Fast, powerful and adaptive to any environment whether it be Retail or Hospitality.

## > Reporting - Purchasing

- Tree Style View Selection & Filtering** – The Stock Purchasing Menu has been graphically updated to allow selection of pending orders and deliveries sorted by supplier and date, with an option to filter the view for selected date periods.
- Review Purchases** – Historical purchases can be viewed on screen in the new tree format. It is easy to select any supplier and date or date range to view purchases. You can delete, print, and review any purchase invoice.

- New Product Creation** – It is possible to create a new product PLU whilst entering deliveries or purchases, providing a faster and more efficient system.
- Spend Reports** – Supplier Cost Reports have been added in varying forms, to show the cost and quantities per supplier, with the ability to show full invoice detail, or simple product groups purchased per supplier, reports are also included to show purchase invoices by supplier by month.



Samstock V4.8 communicates with the following ECR's and Touch Screens:- Sam4s ER-380M, ER-390M, ER-420M, ER-650, ER-5200M, ER-5215M, ER-5240M, SER-6500, SER-6540, SER-7000, SER-7040, SPS-1000, SPS-2000 and the Easy2Touch TS-600 and TS-700.



**Invoices Per Supplier**  
From: 01-07-2008  
To: 01-07-2008

The Brewery	Stock Unit	Reference	Cost
Invoice Date: 01 Jul 2008			
0030	Foster Lager	bag	9508787
2	Heineken	Case of 24	55556
4	200 Orange	Case of 24	56646
6	Coca Cola	Case of 24	11265
0031	Foster Lager	bag	9508788
2	Heineken	Case of 24	55556
<b>TOTAL</b>			
<b>REPORT TOTAL</b>			

Detailed Purchase Invoices by Supplier Reports.

## > Aceeca MEZ1000 RDA - Wireless Handheld Unit



To further enhance Samstock the Aceeca Handheld Unit integrates seamlessly with Samstock Stock Control to offer a truly 'wireless' on-site stocktaking solution.

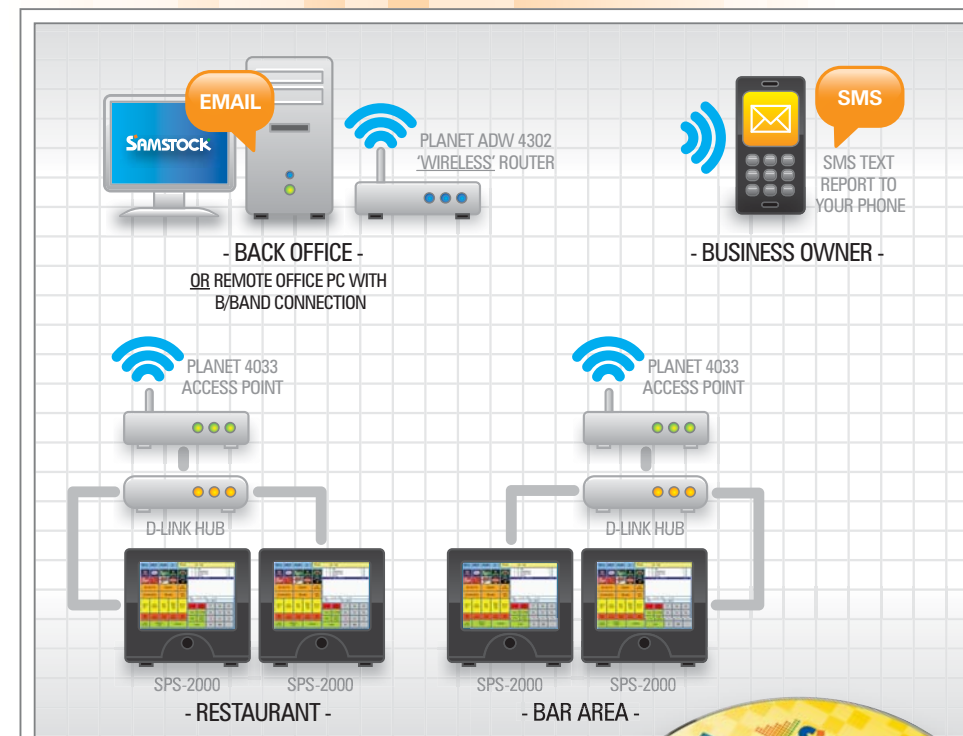
The Meazura™ Rugged Digital Assistant (RDA) combines the flexibility of the Palm OS® with rugged durability.

Use for stock counting with or without on screen theoretical stock values, shelf edge price checking, stock delivery input and product record creation.



**Minimum System Requirements**

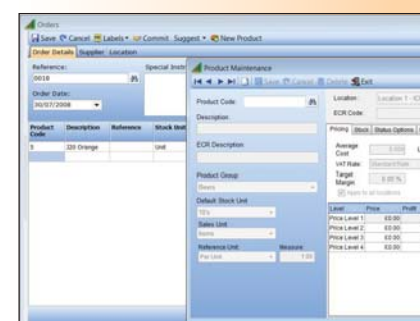
- Windows XP Professional, Windows Vista Business or Windows 2000 Professional.
- 512MB of RAM.
- 1GB of available hard disk space.
- DVD or CD-ROM drive.



The schematic illustrates how Samstock works and integrates with the SPS-2000 using its Wireless Networking System.

## > Reporting - Keep in Touch

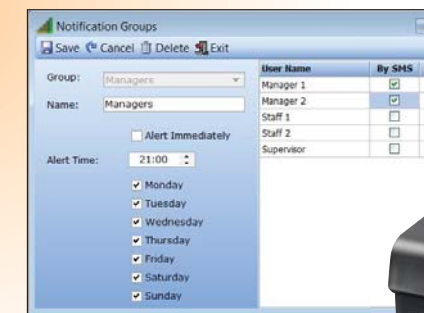
- Reports Via Email, or SMS Text to your Mobile Phone** – Samstock will bring the sales to you wherever you are. It is possible to schedule a timed event for user groups to receive sales information via Email or Text message. The system will send, total product sales including profit and a sum of mix and match discounts, including financial totals such as cash in drawer.



New Product Creation While in Purchasing

**NEW RELEASE 08'**  
More enhanced functions & features than ever before!

- Samevent Contacts You** – If for any reason Samevent can not complete a schedule communications event, you can elect to be notified by email/text messaging explaining which branch hasn't succeeded and the reason.



Screen for Setting up SMS or Email Communications.

## > Samstock V4.8 Stock Control - with the Sam4s SPS-2000 Touch Screen

Samstock provides easy and quick PLU record creation which transfers and updates screens on the SPS-2000.

A user friendly communication scheduler, SamEvent, provides automated reporting and end of

period control at Point of Sale as well as uploading new PLU records and price changes or promotions.



Samstock Products by Supplier Report.

## > Information Sharing - Dealer Features

- Import/Export** – The Import and Export module is no longer an additional module and is included in Samstock Version 4.8. There is the additional enhancement of being able to export a file for a selected location to a spreadsheet, amend the details, and import back to Samstock.
- ICR Accounts** – The upload and download of customer information for the ICR software is now available, including customer transaction view and print.
- Fast Excel Report** – Within each report view, a Microsoft Excel icon has been added which allows direct output of the on-screen report to Excel spreadsheet.

